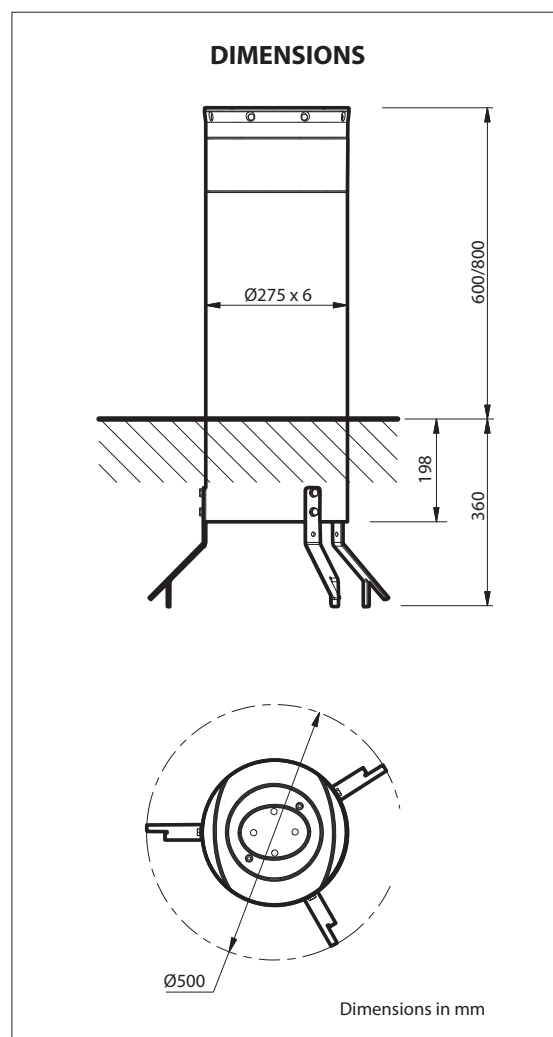


PRODUCT DATASHEET

GRIZZLY-F

Fixed bollard

Fixed bollard for bolting to the floor. Diameter and dimensions are the same as the automatic models. Available in two dimensions.



• Fixed bollard

- Break-in resistance: **250 000 J**
- Painted stem; stainless steel (optional)
- Adhesive film-reflectorized band, customizable (optional)
- Bollard top cover with led lights (optional)

REFERENCE STANDARDS

Electromagnetic Compatibility: 2004/108/CEE; 93/68/CEE (EN55014-1; EN55014-2)

Low voltage: 2006/95/CEE; 93/68/CEE (EN60335-1(2002))

Machinery directive: 2006/42/CEE (EN60204-1)

TECHNICAL-ENVIRONMENTAL MAIN FEATURES	
Rod out of the ground	Ø275 x h.600 x th.6 mm, steel Fe 360 (S 235 JR) * Ø275 x h.800 x th.6 mm, steel Fe 360 (S 235 JR) *
Buried structure	Ø273 x h.198 mm
Foundation	Concrete
Crash impact resistance (from simulation)	250 000 J
Driven rod treatment	Cataphoresis and coating RAL7031 standard, other colour on request
Passive visibility	Reflective film **
Flange (optional)	Cast iron, cataphoresis black, 470x470 mm
Top cover	Cast iron, cataphoresis black, LED lights (optional)
Net weight	Without flange: H.600 ~40 Kg; H.800 ~47 Kg With flange: H.600 ~54 Kg; H.800 ~61 Kg
Gross weight	Without flange: H.600 ~47 Kg; H.800 ~54 Kg With flange: H.600 ~64 Kg; H.800 ~71 Kg

* option, AISI304 or AISI316

** Customizable (optional)

ELECTRICAL FEATURES (optional)	
Light power supply	ALLU 24Vac
Power	Light cable 24 Vac ±10%, 50-60 Hz (up to 80 bollards)
Power consumption	1 W for each bollard
Signalling	On the top with high intensity LEDs

For system composition and installation refer to the regulations in force in the country where the system is being installed.

ITEM SPECIFICATION

Fixed bollard for bolting to the floor. Diameter and dimensions the same as the automatic models. Available in two sizes:

- Ø275 x h.600 x th.6 mm, steel Fe 360 (S 235 JR). Finishing: cataphoresis, powder paint. Break-in resistance 250 000 J. Adhesive reflecting strip. Top cover compatible with high-brightness LED lights. Optional flange.

- Ø275 x h.800 x th.6 mm, steel Fe 360 (S 235 JR). Finishing: cataphoresis, powder paint. Break-in resistance 250 000 J. Adhesive reflecting strip. Top cover compatible with high-brightness LED lights. Optional flange.